

## **OCTOBER 1990**

In October 1990 there was an incident in which boys barricaded themselves in their rooms and carried on a demonstration.

We have reviewed the incident with some care. As with the more serious incident in June 1991 there was no single cause. It arose from the familiar circumstances, described so often, namely inappropriate admissions, frustration of boys and staff, a desire to get attention from the outside world.

In our view the staff at Ty Mawr took a reasonable decision to deal with matters themselves and did so successfully. We find there is no proper complaint to be levelled against any member of staff at Ty Mawr in respect of the incident of October 1990.

## THE SOCIAL SERVICES INSPECTORATE IN WALES

1. We received a good deal of material, both written and oral, about the Social Services Inspectorate (SSI) and its contact with Ty Mawr.
2. Apart from hearing and assessing the written and oral views of the employees of Gwent County Council we interviewed two Inspectors at the Welsh Office.
3. It is important to define the remit of the SSI in its contacts with Ty Mawr. The SSI regarded it as its duty and function essentially to ensure that the appropriate secure accommodation rules and regulations were properly enforced, that records were properly kept, and in particular that there was no abuse of "secure accommodation" at Ty Mawr.
4. The SSI did not regard it as its duty to investigate the mix of entrants nor the general day to day management of Ty Mawr.
5. We read the reports made on Ty Mawr by the SSI. We carried out our own check on records. The records ought to have been fuller. They were, to a degree, so brief as to be unhelpful.
6. **We make a specific finding that there was no abuse of "secure accommodation" disclosed. There was no evidence of abuse either disclosed by the records or by the SSI or by boys who had been resident at Ty Mawr.**
7. It is true that on occasion the time which elapsed between attendance by the SSI and the production of their report was too long. The SSI are inclined to accept this. Bearing that in mind, it is not our view that the frequency or otherwise of the contacts which the SSI had with Ty Mawr or the delays in the production of the report had any causal connection with the defects at Ty Mawr. **The causes of the problems at Ty Mawr lay elsewhere and cannot properly or sensibly be attributed to the SSI.**

## **THE MANAGEMENT REGIME AT AND THE DAY TO DAY RUNNING OF TY MAWR**

We deal elsewhere with the fundamental problem of the inappropriate mix of entrants.

We seek to draw together in this section descriptions of the management regime at Ty Mawr. It is necessary to bear in mind that significant changes have been made both physically and in management terms. We also bear in mind that the passage of the Children Act renders certain of our queries or criticisms historic.

### **Documentation internally.**

We were given free and unrestricted access to internal documentation. Many of our visits were made with little or no prior notification. A common feature which informed the necessary documentation within Ty Mawr was that there seemed to us to be a genuine concern for the welfare of the children and young people resident there. Further, on a fairer view of a vast amount of documentation Mr. Phelan appeared to us to have a proper care for the staff as well as the residents. However the skill of assessing and accurately reporting in writing was frequently below an acceptable standard. Many of the care staff had no qualifications. In certain instances educational levels were lacking. In many instances the reports or assessments were barely literate and were not of the standard which we should have expected. The poor quality of some reports is in our judgment a consequence of financial pressures upon the County Council, so that they were unable to recruit qualified staff. It is difficult to criticise the County Council fairly for this since they are bound by budgetary constraints. We also bear carefully in mind that other enquiries, more widely based than our own, will attend to these problems.

### **Documentation externally.**

There was in our view a proper system of reporting upwards from Ty Mawr to the County Council. We believe that the system itself was satisfactory, though on occasions reports were delivered late or not at all. This latter defect we believe was attributable to the fact that the intended reporter, Mr. Tandy, was overburdened with other duties. This defect had in any event been righted internally before this inquiry began.

### **The situation of women at Ty Mawr.**

There were no women in senior positions at Ty Mawr. **This was a mistake.** Many of the care staff formed good relationships with the boys in their care. However the general culture of Ty Mawr was entirely masculine. This in part we perceive as a historical remnant of the early history of Ty Mawr and in part due to a failure of imagination. It would have been infinitely better in our judgement if some senior positions at Ty Mawr had been held by appropriately qualified and trained women. If Ty Mawr were to

continue in its present form, which we do not advise, an essential first priority would be the placing of women in some senior positions.

### **Eating arrangements**

The majority of the young people at Ty Mawr, whatever their background, their problems, their needs, or their circumstances, were obliged to eat in a central dining room. This we believe to have been wholly inappropriate. It was in part a cause of Ty Mawr's problems. The wide spectrum of young persons living at Ty Mawr, to which we have so often alluded, made it imperative that the Principal should have at least the opportunity of segregating the boys for eating purposes. To have all the boys eating in a central dining room brought about the following consequences:-

- (a) There was no possibility of sensitive segregation where appropriate to the boys' needs;
- (b) Discipline, control and guidance by the staff was much more difficult. Boys who might be resident for a matter of days were capable of taking the opportunity to disrupt what should have been a stable regime for boys who required and were entitled to it.
- (c) Boys who were quite seriously disturbed would be mixing with those who were not, to the frequent disadvantage of both.

### **Clothing**

The approach towards the boys' clothing was out of date. There were restrictions on wearing their own clothes. More importantly there were restrictions on the purchase of their own clothes. This was a failure of reflection, thought and imagination. We are pleased to be able to report that a more flexible view is now adopted with the boys being able to purchase their own clothing, within sensible limits. This was a change brought about after the commencement of our Inquiry.

### **The management Board**

Until relatively recently there was in existence a Management Board dealing with Ty Mawr. The advantages to such a system were, in our view, that there would be a degree of personal and perceived interest in Ty Mawr, that the staff feeling of isolation would be reduced, and that there would be a degree of local input into management of the school. It was a mistake for the County Council to abolish the Management Board. Bearing in mind our recommendation that Ty Mawr should be closed, we make no further comment other than that an institution such as Ty Mawr, which can rapidly

become beleaguered, may find its situation ameliorated by the availability of a Management Board.

### **Buildings**

We have described the buildings elsewhere. Within the limits of what was possible the buildings and indeed the whole campus were properly managed. The fundamental problem is, as has been seen from our description of the buildings, that they were wholly unsuitable for their intended purpose and were not capable of being brought up to appropriate standards.

### **Medical Attention**

There was a standing arrangement, which worked regularly and appropriately, that a local general practitioner should attend to examine the boys. In the nature of things this was mainly based on their physical needs. Psychiatric attention was available when requested, and numerous illustrations of the availability of psychiatric help are set out in the section which deals with suicides, attempted suicides and self-harm. The comment we make is that a closer liaison between the services of psychiatric assistance and help and the staff and residents at Ty Mawr would have been advantageous, although bearing in mind the flawed mixture of admissions, this would have been a palliative rather than a cure.

### **Recruitment**

We deal elsewhere with the very substantial staff problem. Absenteeism was, in our judgement, disturbingly high. **The level of qualifications of most of the care staff was nil.** We hope to avoid the elementary pitfall of assuming that qualification is all in this difficult field. To recruit care staff from job centres was, in our view, wrong. It would be tempting, though facile, to overlook a deeper problem, namely, that the County Council has limited budgetary resource, that it has to attend to a vast range of priorities within its social services resource, and that the pay levels for unqualified care staff are very low. This is a problem we describe. It is not within our terms of reference to prescribe a cure.

### **Education**

We have described the physical availability of educational facilities. The teaching staff had a very difficult task. Boys came and went, often with little or no notes, and with few coherent educational records. The boys resident for a longer period of time had their education disrupted by the short-term attendance of boys who knew they would be at Ty Mawr for a brief period, who were frequently resentful, and often had no real interest in education. Thus the inappropriate mix of entrants had its further effect both on students and on teachers. We doubt whether this was sufficiently recognised. Mr. Richards in

particular made every effort to reflect first about the nature of the problem and second about certain remedies. The feeling of isolation which pervaded the establishment affected the approach to educational facilities. It would have been infinitely better if there had been a greater exchange between mainstream education and the educational opportunities offered at Ty Mawr. It cannot be too strongly stressed in our view that, since the boys at Ty Mawr were likely to be disadvantaged, it was essential that every considered effort be made to ensure that they did not suffer further disadvantage in the acquisition of a full education.

Bearing in mind our central recommendation as to the closure of Ty Mawr, it would be neither helpful nor appropriate to make specific recommendations in respect of education. We simply reiterate our concern that education at an institution such as Ty Mawr should not be divorced from education generally.

## **THE MEDIA AND GWENT COUNTY COUNCIL**

The role of the media in the affairs of Ty Mawr has been of great importance and we devote a brief moment to reviewing that role. It is the purpose and function of a free press to investigate fearlessly but also with scruple and accuracy. Sometimes it can only carry out its work with the co-operation of those in authority. We formed the impression that a degree of mutual mistrust and hostility had developed between Gwent County Council and certain of its employees on the one hand, and media representatives on the other.

### **There were faults on both sides.**

The Council (which we use as an umbrella term to include its employees at various levels) had a legitimate desire to ensure the privacy and confidentiality of those within its care. On occasions this became over-defensiveness. We fully recognise that there are many questions of fine judgment involved, but we commend as a general policy an approach to the media which is as candid and cooperative as other considerations allow.

Certain media allegations made against the Council and Ty Mawr were lurid and over-sensational. There was insufficient understanding of the difficulties the Council faced – under-resourcing, under-funding, attempting to deal with unhappy young people and exceptionally difficult circumstances. Every journalist should, we believe, pause carefully before publishing allegations so as to ensure that young persons interests are not sacrificed in favour of short term sensation. Every allegation made against Ty Mawr made the work of the staff more difficult, and therefore the lives of the boys potentially less stable.

We conclude in this way:-

- (i) We had every possible assistance from the media.
- (ii) Without media pressure it is doubtful whether this enquiry would have been held.
- (iii) There are many opportunities for mischievous allegations against institutions like Ty Mawr. Such allegations can cause great damage and ought to be verified with care before being published.

## **POSSIBLE CRITICISMS OF STAFF**

### **Mr. Christopher Phelan.**

As set out in the body of the Report, we find Mr. Phelan to have been a dedicated, conscientious Principal at Ty Mawr with the interests of the boys genuinely first in his mind. We believe however that he is open to the following areas of criticism:

- a) He did not attempt sufficiently to impose his authority to object to the admission of boys to Ty Mawr when he felt such admissions to be inappropriate. We recognise the difficulties under which he laboured but we believe that his objection should have been more vigorous and continued.
  
- (b) Despite the fact that there was a written procedure laid down at Ty Mawr to cover dealings with property stolen by boys resident at Ty Mawr he did not take sufficient steps to impose those guidelines nor to bring them to the attention of staff.

It will be seen in the context of our lengthy investigation such criticisms are relatively minor. In our judgment they should in no way be utilised to penalise Mr. Phelan whether in his employment prospects or in any other way.



**Mr. W. K. Williams.**

We believe the following criticisms can be levelled at Mr. W. K. Williams:-

- (a) He was in error in journeying to Aberaeron with nine boys with simply one female member of staff to accompany him.
- b) He was in error in sharing a tent overnight with that female member of staff.
- (c) He was in error to buy and provide cider for the boys in his care.
- (d) He dealt with property which he knew to be stolen in a wholly inappropriate way.
- e) He used towards a number of boys on a number of occasions a degree of violence which, though relatively minor, was unacceptable.

### **Mr. Alan Tandy**

Mr. Tandy we found to be a committed man in his attempts to discharge his proper duties. It may be that he was over-burdened with work particularly bearing in mind that he was spending a degree of time attending a Course. The criticism we make against Mr. Tandy is limited to a failure on some occasions in the past to provide to his superiors with proper written reports relating to his visits to Ty Mawr.

### **Mr. Perkins**

**Mr. Perkins has had a distinguished and lengthy career in the field of social services. It is with a feeling of regret and after a great deal of thought that we make the following criticisms:**

- (a) By 1990/1991 his style of management was perceived to have become unduly autocratic, verging on the dictatorial. His style was such that he was on occasions dismissive of views other than those of his own, and he failed to manage in a way which gained the confidence of his staff. Too many persons at all levels spoke of a climate of fear engendered by him, of a feeling of unease at approaching him with problems, and of a feeling that his favour or disfavour might be granted or taken away at any time without proper basis. These are grave criticisms.
- (b) He failed to ensure sufficient management support of staff at Ty Mawr in difficult circumstances, in particular support of Mr. Hewitt, Mrs. Hartwright and the Principal Mr. Phelan.
- (c) After this Inquiry began he provided a Memorandum relating to the day to day control and management of Ty Mawr which left uncertain in the minds of Mr. Phelan, Mr. Richards and Mr. Tandy as to who was in everyday operational control of Ty Mawr. This confusion was allowed to continue unnecessarily.

### **Gwent County Council**

The following criticisms are properly to be made:-

- (a) The Board of Management which formerly attended to Ty Mawr was abolished. This was a mistake.
- (b) The Council has insisted on making appointments to Ty Mawr. In our view this is not a task which Councillors are qualified or fitted to perform and it should have been left to professional staff. In particular the recruitment of care staff by application to local Job Centres should never have been allowed.
- (c) The County Council was unduly restrictive in its attitude to press and media enquiries and should have adopted a more open and trusting attitude towards press and media generally.



# APPENDIX A

## LIST OF INDIVIDUALS AND ORGANISATIONS WHO MADE WRITTEN REPRESENTATIONS

1. Mr. B. O. Alden.
2. Barnardo's 175 Project, Newport.
3. British Association of Social Workers (Wales) (in association with the following, all being members of the Standing Committee on Secure Accommodation for Young Offenders in Wales; Association for Juvenile Justice (Wales), National Association of Probation Officers (S.E. Wales Branch), Social Care Association, Wales Intermediate Treatment Forum and the Children's Society (Advocacy Unit).
4. Mr. Clive Bush.
5. The Children's Society.
6. Mr. Frank Cooke.
7. Gilwern (Lower Common) Resident's Association.
8. Gwent County Council.
9. Mrs. Edna Hepburn.
10. Drs. Kapp, Morgan & McDwyer.
11. East Gwent Magistrates Courts.
12. National & Local Government Officers Association (Gwent County Branch).
13. National Union of Teachers, Wales.
14. National Union of Public Employees.
15. Nevill Hall Hospital (from the Consultant, Accident & Emergency).
16. Geraint Phillips.
17. Gwent Constabulary.
18. Police Federation of England & Wales, Joint Branch Board, Gwent Constabulary.
19. Mrs. Valerie Shepherd.
20. Transport & General Workers Union.
21. A Voice for the Child in Care.
22. Dr. J. R. Waring and colleagues.
23. Mr. Robin Williams.

## APPENDIX B

Mr. Andrew C. G. Hopper,  
*Solicitor to the Inquiry.*

Mrs. Susan Parnell,  
*Assistant Solicitor to the Inquiry.*

Miss Janet Davies,  
*Shorthand Writer from Harry Counsell & Co., Swansea.*

Gwent C.C. Social Services Department  
*in respect of the very full documentation provided to the Inquiry.*

The Clerk and Usher of the Magistrates Court, Abergavenney  
*in respect of accommodation and facilities provided to the Inquiry.*

The Gwent Constabulary.

## APPENDIX C



Rowley Jones Hostel under repair.

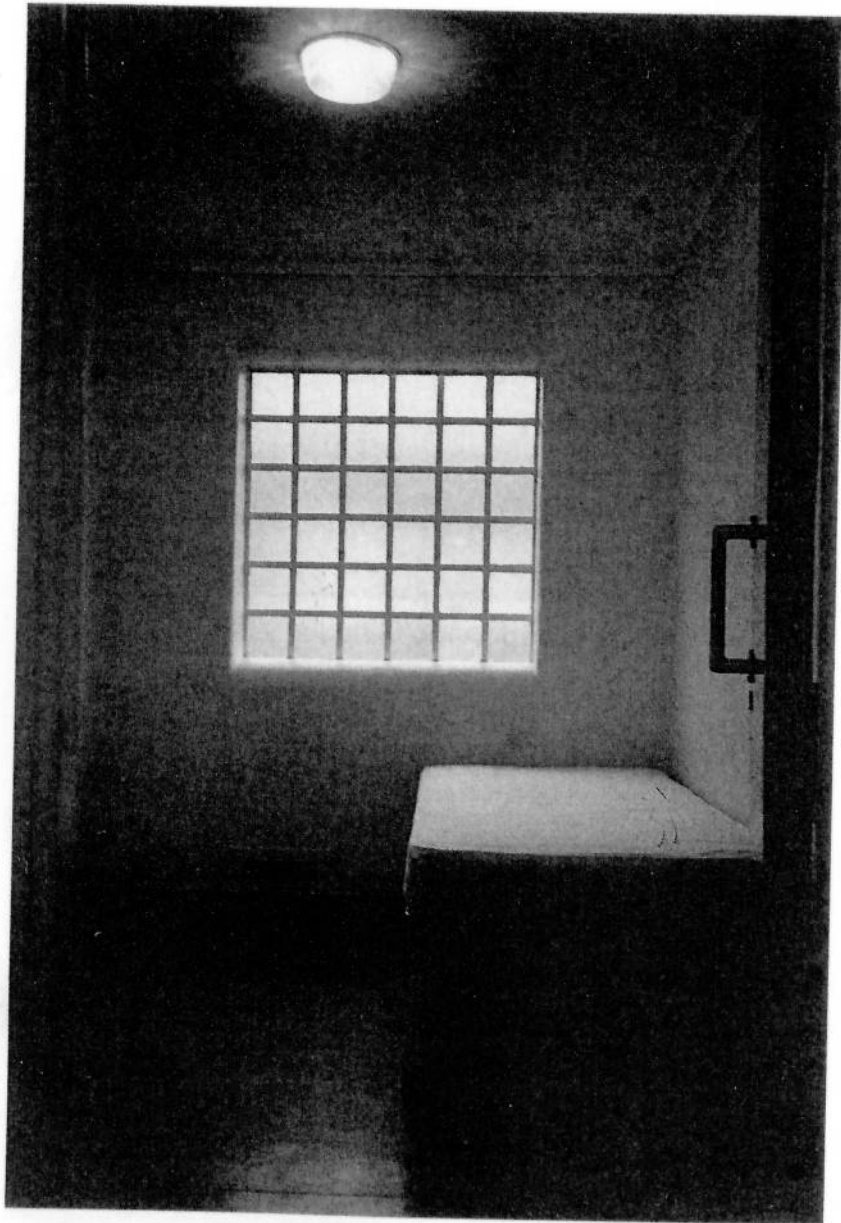




Rowley Jones Interior.



I.C.U. Exterior



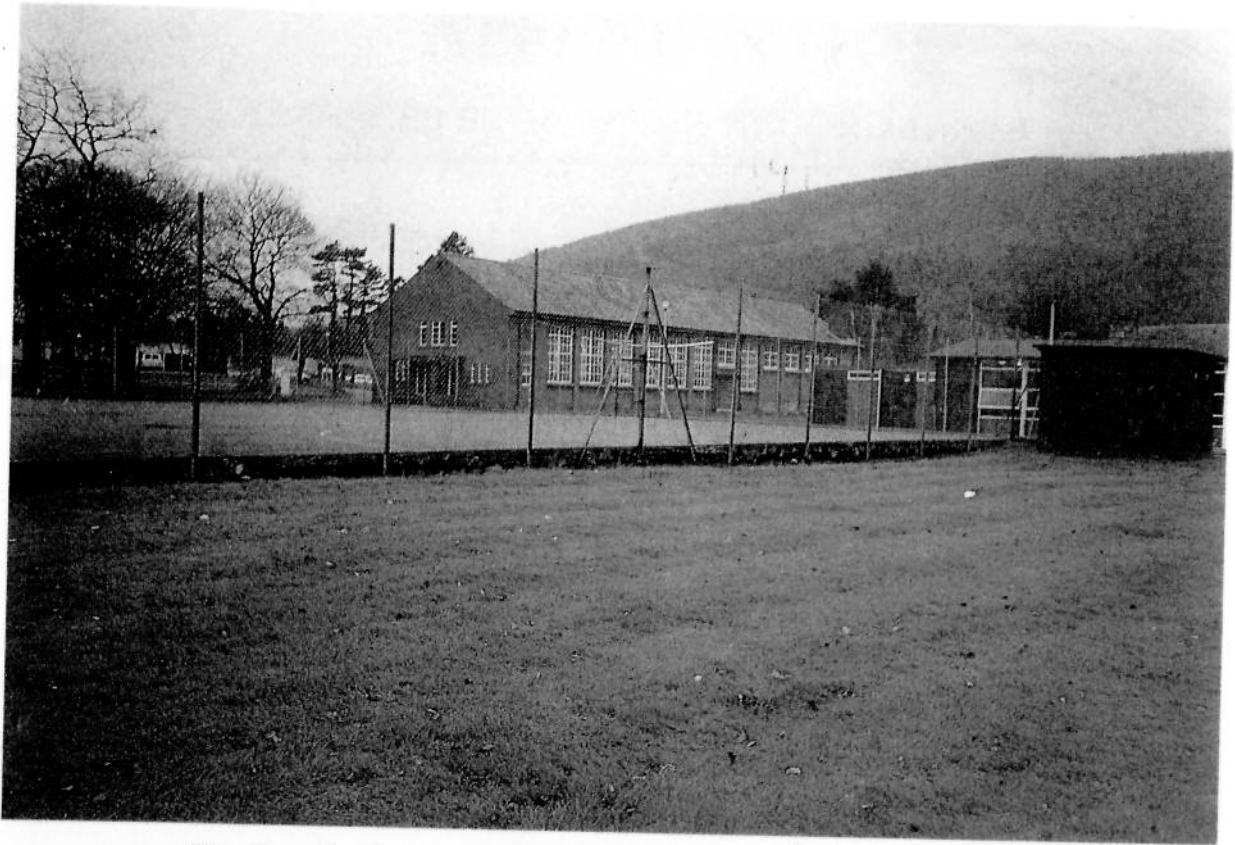
A Secure Room



The Campus—A General View



The Campus—A General View



The Tennis Court—The fencing is NOT Perimeter Fencing.



The Central Dining Room.



The Office.



Part of the Garden.

# APPENDIX D

## ABSENCES FROM WORK RECORD 1988/89

Staff Member	APR	MAY	JUN	JUL	AUG	SEPT	OCT	NOV	DEC	JAN	FEB	MAR	TOTAL
1	1	—	—	—	—	—	—	4	—	—	—	—	5
2	5	—	—	—Ter 26 August									5
3	4	—	—	2	—	—	—	—	—	—	6	12	24
4	—	—	1	—	—	1	—	3	—	—	—	3	8
5	—	—	—	—	—	2	—	3	—	—	—	1	6
6	—	—	—	—	—	—	1	—	—	—	—	12	13
7	—	—	—	—	—	—	—	—	2	—	—	—	2
8	—	—	—	—	—	—	—	14	—	—	—	—	14
9	—	—	—	—	—	—	—	—	7	—	—	—	7
10	—	—	4	—	—	—	—	—	—	—	1	3	8
11	—	—	—	—	—	—	—	—	2	—	—	—	2
12	—	—	—	—	—	6	27	—	—	—	—	—	33
13	3	7	—	—	19	—	—	1	3	—	2	—	35
14	—	—	8	—	—	4	15	30	24	—	—	2	83
15	—	—	—	1	—	—	1	20	—	20	19	—	61
16	—	—	—	—	—	1	2	—	6	—	12	5	26
17	—	—	6	3	25	30	31	30	31	23	8	—	179
18	1	—	—	1	1	—	—	2	—	—	—	—	5
19	—	—	—	—1st J Mat L ret. 6th N									
20	—	—	—	8	—	Sus	—	—	—	—	—	—	8
21	—	—	—	—	9	4	—	—	—	—	2	1	16
22	—	—	—	—	2	1	—	21	—	—	—	1	25
23	—	—	—	—	—	—	2	—	—	3	—	—	5
24	—	—	2	—	—	19	31	21	—	—	—	—	73
25	—	—	—	—	—	—	—	1	5	—	—	—	6
26	—	—	—	1	—	—	—	2	—	—	—	—	3
27	—	2	—	—	—	—	—	—	—	1	2	—	5
28	—	—	—	1	1	1	—	—	1	2	—	1	7
29	—	—	2	—	—	2	—	2	—	—	—	1	7
30	Appointed 27th July			—	—	—	—	1	—	—	—	Term 14th D	1
31	Appointed 30th Sept.			—	—	—	—	Term 27th Nov.					—
32	Appointed 7th Dec.												
Office and Domestic Staff not taken into consideration.													
Number of Staff absent from duty due to sickness (day basis) — 672 days.													

## ABSENCES FROM WORK RECORD 1989/90

Staff Member	APR	MAY	JUN	JUL	AUG	SEPT	OCT	NOV	DEC	JAN	FEB	MAR	TOTAL		
1	—	—	—	2	1	—	—	—	—	—	—	—	3		
2	—	—	—	1	—	—	—	14	3	—	16	19	53		
3	4	21	—	2	—	—	3	1	5	—	—	3	39		
4	6	—	—	2	—	—	1	5	3	—	—	—	17		
5	—	2	—	—	—	—	—	2	—	2	1	2	9		
6	—	—	—	—	—	—	1	—	—	—	—	—	1		
7	4	—	—	—	—	—	—	18	31	31	26	—	106		
8	—	—	10	—	—	—	1	10	1	—	—	—	22		
9	—	—	—	—	—	7	—	7	17	—	—	—	31		
10	—	—	—	—	—	—	—	—	—	—	28	11	39		
11	2	—	—	—	7	—	—	—	3	—	28	11	42		
12	—	—	—	—	—	—	2	—	—	1	—	4	17		
13	7	—	1	21	31	23	—	—	6	6	28	4	127		
14	—	1	—	3	—	14	1	9	26	31	28	19	231		
15	—	—	—	1	—	11	22	—	4	7	1	—	46		
16	—	—	1	21	—	—	27	30	31	7	—	—	117		
17	—	—	20	31	31	30	31	5	—	—	—	—	148		
18	12	—	—	—	—	—	—	—	2	1	1	25	29		
19	—	—	19	31	7	—	1	13	7	7	28	31	144		
20	1	1	1	—	—	7	7	10	31	31	28	31	148		
21	27th January starter														
22	—	1	25	31	31	30	31	30	31	31	28	31	300		
23	—	—	—	—	1	19	16	—	—	2	—	—	38		
24	—	14	1	—	—	—	2	—	2	11	5	—	35		
25	—	—	—	1	—	—	—	4	—	—	—	—	5		
26	—	—	—	—	—	—	2	—	4	—	—	—	6		
27	14	—	4	—	—	—	18	—	—	9	—	—	45		
28	—	—	2	—	—	—	—	—	2	—	—	—	4		
29	2	—	4	—	2	—	—	2	3	4	2	2	21		
30	1	2	—	1	1	—	1	—	2	1	—	—	9		
31	—	—	2	1	—	14	—	—	—	—	8	—	25		
32	Appt. 3.4.89														
33	Appt. 6.10.89							—	—	2	Term 28.2		2		
34	Appt. 3.12.89 Term 11.12.89														
35	Started 12.3.90														
Office and Domestic Staff not taken into consideration. Number of Staff absent from duty due to sickness (day basis) — <b>1858.</b>															

## ABSENCES FROM WORK RECORD 1990/91

Staff Member	APR	MAY	JUN	JUL	AUG	SEPT	OCT	NOV	DEC	JAN	FEB	MAR	TOTAL
1	1	—	—	—	—	1	—	4	—	—	—	—	1
2	—	1	24	—	—	6	—	5	3	2	—	—	41
3	—	14	3	—	—	—	—	4	7	—	—	—	28
4	—	24	17	—	—	2	—	5	—	—	4	—	52
5	1	1	—	4	1	—	1	—	—	—	—	—	8
6	13	—	—	1	—/Appointed Social Worker								14
7	6	—	—	2	—	—	—	—	—	—	—	—	8
8	—	—	—	—	—	1	2	—	1	—	—	—	4
9	—	—	—	20	—	—	—	—	2	24	27	31	104
10	—	—	—	—	—	—	—	—	—	2	14	—	16*
11	—	—	2	—	—	—	10	30	31	31	19	—	121
12	30	5	—	—	—	—	1	—	1	—	—	—	37
13	30	31	30	31	31	30	31	30	31	4	—	—	279
14	—	—	1	16	26	—	—	3	9	—	—	—	55
15	—	—	—	—	—	7	—	26	31	31	28	31	154
16	—	—	—	—	—	—	1	—	1	—	1	—	3
17	—	—	—	—	1	—	—	—	—	1	—	—	2
18	12	—	4	—	16	—	—	—	—	—	7	—	39
19	30	31	30	31	31	2/Resigned						155	
20	10	25	30	8	3	2/Appointed Social Worker						78	
21	—	2	—	—	—	—/Appointed Social Worker						2	
22	—	—	—	12	—	—	—	18	9	2	24	31	96
23	30	31	30	31	12	—	—	6	—	2	—/App. S.W.		142
24	1	6	—	2	—	2	6	2	2	—	2	—	23
25	—	—	3	31	9	—	2	—	3	—	—	—	48
26	1	—	20	25	—	1	—	7	—	3	—	—	57
27	—	—	—	9	—	1	—	—	—	—	5	—	15
28	1	—	—	—	—	3	1	—	—	5	—	—	10
29	—	—	—	1	—	—	—	—	—	—	—	—	1
30	—	—	—	2	—	—	1	—	—	—	—	—	3
31	—	1	—	4	—	1	1	2	—	—	—	—	9
32	—	—	—	—	—	—	—	—	—	—	3	—	3
33	—	—	—	—	—	—	—	2	—	—	—	—	2
34	—	—	—	—	—	—	—	7	—	—	—	—	7
35	—	—	—	2	—	2	—	—	1	—	—	—	5
36	—	—	—	6	31	30	—	—	—	—	—	—	67
37	2	—	—	—	—	—	—	—	—	6	4	—	13
38	—	—	—	2	—	—	2	1	—	2	1	—	8
39	2	—	1	—	6	30	31	3	—	2	1	—	76
40	—	—	—	—	2	—	7	—	—	—	12	—	21

Domestic Staff not taken into consideration.

\* 94 Suspension.

Number of Staff absent from year due to sickness/suspension (day basis) — **1580 working days.**



## ABSENCES FROM WORK RECORD 1991/92

Staff Member	APR	MAY	JUN	JUL	AUG	SEPT	OCT	NOV	DEC	JAN	FEB	MAR	TOTAL
1	30	note until 29th May											
2	30	note until 14th June											
3	4	note until 30th June											
4	2												
5	30	note until 27th May											
6		note until 27th May											
7	29												
8	30	note until 23rd May											
9	1												
10	8	6											
11	—	3											
12	1												
13	—	3											
14	—	1											
15	—	1											
16	1												
17	2												
18	24	note until 22nd May											
19	1												
20	1												

# APPENDIX E

## ADMISSIONS 1986

<i>Age</i>	<i>D.O.A.</i>	<i>Area</i>	<i>Reason/Order</i>
16.2	13. 1.86	E. Valley	Remand
16.5	32. 1.86	N. Gwent	Remand
15.9	23. 1.86	N. Gwent	Remand
14.6	27. 1.86	N. Gwent	I.C.O.
14.2	27. 1.86	Newport	Remand
15.9	4. 2.86	E. Gwent	Section II 1980
13.5	17. 2.86	S. Gwent	Remand
13.9	17. 2.86	S. Gwent	Remand
15.8	19. 2.86	E. Valley	Remand
14.10	21. 2.86	Newport	Section II Assessment
14.11	24. 2.86	N. Gwent	Interim Order
15.10	25. 2.86	E. Gwent	Remand
16.11	10. 3.86	N. Gwent	Remand
15.6	11. 3.86	Newport	Section II
16.0	12. 3.86	Gwynedd	Section II 1980
14.3	18. 3.86	S. Gwent	Remand
16.7	1. 4.86	E. Valley	Remand
14.2	1. 4.86	N. Gwent	Section II 1980
14.5	2. 4.86	E. Valley	Section II 1980
14.11	5. 4.86	E. Valley	Remand
16.8	7. 4.86	N. Gwent	Section I 1969
14.2	11. 4.86	E. Gwent	Section II 1980
16.9	11. 4.86	Newport	Remand
15.10	11. 4.86	Newport	Remand
15.3	16. 4.86	E. Valley	Remand
15.11	14. 4.86	E. Gwent	Remand
14.9	2. 5.86	E. Gwent	Section II 1980
13.10	2. 5.86	E. Valley	Remand
14.6	6. 5.86	N. Gwent	Section II 1980
14.11	6. 5.86	N. Gwent	Section III 1969
15.8	13. 5.86	Newport	Section II 1980
16.5	19. 5.86	N. Gwent	Remand
14.11	19. 5.86	N. Gwent	I.C.O.
15.6	19. 5.86	E. Gwent	Section II 1980
15.6	21. 5.86	E. Valley	I.C.O.
16.11	24. 5.86	E. Gwent	Section II 1980
14.10	28. 5.86	Mid Glamorgan	Section II 1980
15.2	29. 5.86	E. Valley	Section II 1980
15.10	2. 6.86	N. Gwent	Remand
15.5	2. 6.86	N. Gwent	Remand
16.3	5. 6.86	Clwyd	Remand
15.10	6. 6.86	Mid Glamorgan	Section II 1980
14.10	6. 6.86	E. Gwent	I.C.O.

APPENDIX E (Continued)

<i>Age</i>	<i>D.O.A.</i>	<i>Area</i>	<i>Reason/Order</i>
12.11	6. 6.86	E. Gwent	I.C.O.
15.6	16. 6.86	N. Gwent	I.C.O.
15.8	17. 6.86	N. Gwent	Section II 1980
14.11	22. 6.86	S. Gwent	Section II 1980
14.9	20. 6.86	Mid Glamorgan	Remand
16.9	25. 6.86	Wolverhampton	Remand
14.8	30. 6.86	Newport	Section II 1980
14.1	7. 7.86	Mid Glamorgan	Section I 1980
13.9	8. 7.86	Newport	Section I 1980
14.0	10. 7.86	E. Valley	Section II 1980
15.4	15. 7.86	E. Gwent	Section II 1980
16.6	17. 7.86	Clwyd	Remand
15.6	21. 7.86	Gloucester	Section I 1980
15.8	21. 7.86	Newport	Remand
15.3	22. 7.86	Worcester	P.A.C.E.
15.8	22. 7.86	Worcester	P.A.C.E.
14.8	22. 7.86	Newport	Remand
15.10	21. 7.86	Newport	Remand
15.3	24. 7.86	S. Gwent	Section II 1980
15.2	16. 8.86	Mewport	Section II 1980
15.7	18. 8.86	S. Gwent	Remand
12.7	28. 8.86	E. Valley	Section I 1980
14.3	30. 8.86	Newport	Remand
15.5	1. 9.86	Mid Glamorgan	Remand
16.4	11. 9.86	E. Valley	Remand
14.1	12. 9.86	N. Gwent	Section II 1980
15.11	12. 9.86	Gwynedd	Section I 1980
13.11	15. 9.86	Newport	Section II 1980
15.7	16. 9.86	E. Valley	Section II 1980
14.2	29. 9.86	S. Gwent	Remand
15.10	14.10.86	Powys	Remand
15.10	21.10.86	Dyfed	Remand
15.0	27.10.86	Mid Glamorgan	C.O.7(7)
15.5	28.10.86	Newport	Section II 1980
14.7	29.10.86	Wiltshire	Remand
15.5	11.11.86	N. Gwent	I.C.O.
15.0	14.11.86	N. Gwent	Section II 1980
13.10	21.11.86	Newport	Care Order 1969
16.1	28.11.86	N. Gwent	Remand
16.0	28.11.86	Newport	Section II 1980
14.4	2.12.86	E. Valley	Section II 1980
12.6	22.12.86	S. Gwent	Remand
13.11	27.12.86	Newport	Section II 1980

## APPENDIX E (Continued)

## ADMISSIONS 1987

<i>Age</i>	<i>D.O.A.</i>	<i>Area</i>	<i>Reason/Order</i>
14.9	26. 1.87	N. Gwent	I.C.O.
16.0	29. 1.87	N. Gwent	Remand
15.0	30. 1.87	Gwynedd	Section II 1980
15.6	2. 2.87	Powys	Remand
13.5	10. 2.87	Mid Glamorgan	C.O. 7(7)
16.10	13. 2.87	Clwyd	Remand
16.10	18. 2.87	Clwyd	Remand
15.3	23. 2.87	N. Gwent	Section II 1980
16.0	3. 3.87	Newport	Section II 1980
14.8	3. 3.87	Newport	Section II 1980
15.6	6. 3.87	E. Valley	Remand
15.3	4. 4.87	Newport	Remand
16.2	13. 4.87	E. Valley	Remand
12.8	13. 4.87	N. Gwent	Section II 1980
16.5	16. 4.87	Newport	Remand
15.10	16. 4.87	Newport	Remand
13.8	22. 4.87	Mid Glamorgan	Section I 1980
14.7	29. 4.87	N. Gwent	Section I 1980
15.10	29. 4.87	E. Valley	Section II 1980
13.11	3. 5.87	Newport	Section I 1980
16.6	9. 5.87	Mid Glamorgan	Remand
14.0	20. 5.87	N. Gwent	Section II 1980
15.7	21. 5.87	N. Gwent	Section II 1980
15.0	22. 5.87	Mid Glamorgan	Section I 1980
14.6	21. 6.87	Newport	Section II 1980
16.4	4. 6.87	Powys	Remand
15.0	8. 6.87	Newport	Section II 1980
14.6	8. 6.87	Newport	Section II 1980
13.0	15. 6.87	Newport	Section II 1980
12.11	19. 6.87	E. Gwent	Section II 1980
14.9	30. 6.87	E. Gwent	Section II 1980
15.5	3. 7.87	S. Gwent	Remand
10.5	6. 7.87	E. Valley	Section II 1980
14.7	6. 7.87	E. Valley	Section II 1980
14.7	6. 7.87	E. Valley	Section II 1980
12.5	8. 7.87	E. Valley	Section II 1980
15.7	8. 7.87	Newport	Section II 1980
15.3	14. 7.87	Newport	Section II 1980
15.1	20. 7.87	S. Gwent	Section II 1980
14.4	26. 7/87	N. Gwent	Section II 1980
14.7	28. 7.87	Newport	Section II 1980
14.11	3. 8.87	Newport	Section II 1980
12.10	10. 8.87	N. Gwent	I.C.O.

APPENDIX E (Continued)

<i>Age</i>	<i>D.O.A.</i>	<i>Area</i>	<i>Reason/Order</i>
15.3	18. 8.87	N. Gwent	Remand
15.2	29. 8.87	S. Glamorgan	Remand
15.0	4. 9.87	E. Gwent	I.C.O.
12.10	4. 9.87	E. Gwent	Remand
14.10	9. 9.87	Dyfed	Section I 1980
15.6	9. 9.87	Dyfed	Section I 1980
15.5	11. 9.87	E. Valley	Section II 1980
13.8	16. 9.87	E. Valley	Section II 1980
14.11	17. 9.87	Newport	Section II 1980
15.8	18. 9.87	Gwynedd	Remand
16.6	5.10.87	Gwent	Section I 1980
15.1	8.10.87	Gwynedd	Care order 7(7)
16.10	10.10.87	S. Gwent	Section II 1980
15.5	12.10.87	Mid Glamorgan	Section II 1980
15.3	19.10.87	Newport	P.A.C.E.
11.5	21.10.87	Newport	P.A.C.E.
16.8	21.10.87	Newport	Remand
15.8	30.10.87	Mid Glamorgan	Care Order 7(7)
12.2	16.11.87	Newport	Section II 1980
14.2	21.11.87	Mid Glamorgan	Section I 1980
14.1	28.11.87	Mid Glamorgan	Section I 1980
16.2	30.11.87	S. Gwent	Remand
15.2	1.12.87	Newport	I.C.O.
15.5	8.12.87	E. Valley	P.A.C.E.
16.4	24.12.87	E. Gwent	Section II 1980

APPENDIX E (Continued)

ADMISSIONS 1988

<i>Age</i>	<i>D.O.A.</i>	<i>Area</i>	<i>Reason/Order</i>
13.6	4. 1.88	S. Gwent	Section II 1980
15.6	5. 1.88	N. Gwent	P.A.C.E.
13.6	9. 1.88	N. Gwent	Section II 1980
16.2	22. 1.88	N. Gwent	Remand
15.4	25. 1.88	N. Gwent	Remand
13.0	25. 1.88	Newport	Section II 1980
15.0	26. 1.88	Mid Glamorgan	Remand
16.1	31. 1.88	E. Valley	Section II 1980
16.9	6. 2.88	Newport	Remand
16.0	6. 2.88	E. Gwent	P.A.C.E. 38(b)
15.0	8. 2.88	Newport	Section II 1980
14.6	9. 2.88	E. Valley	Remand
16.0	10. 2.88	Newport	Remand
16.8	10. 2.88	Newport	Remand
14.9	15. 2.88	Newport	Section II 1980
12.4	19. 2.88	Newport	Section I 1980
16.0	23. 2.88	Cleveland	Remand
16.0	26. 2.88	N. Gwent	Remand
12.1	26. 2.88	Newport	Section II 1980
14.10	28. 2.88	Mid Glamorgan	Section I 1980
15.1	29. 2.88	Mid Glamorgan	Section II 1980
15.0	11. 3.88	Gwynedd	V./Res.
15.0	14. 3.88	S. Gwent	I.C.O.
15.0	16. 3.88	E. Valley	Remand
15.0	17. 3.88	E. Valley	Section II 1980
16.8	31. 3.88	E. Valley	Remand
14.0	25. 3.88	S. Gwent	Section II 1980
13.6	30. 3.88	Newport	Section II 1980
14.6	21. 3.88	N. Gwent	I.C.O.
15.6	12. 4.88	E. Valley	Remand
15.10	25. 4.88	E. Valley	Remand
13.6	25. 4.88	Mid Glamorgan	Section II 1980
15.5	26. 4.88	S. Gwent	Section II 1980
13.0	27. 4.88	N. Gwent	Section II 1980
15.7	27. 4.88	E. Valley	Section II 1980
15.5	4. 5.88	E. Valley	Remand P.A.C.E.
13.2	11. 5.88	Mid Glamorgan	Section II 1980
15.7	4. 6.88	Newport	Section II 1980
16.2	7. 6.88	Newport	Remand
15.4	10. 6.88	Newport	Remand
14.10	28. 8.88	Dyfed	Remand
12.11	30. 6.88	S. Gwent	Section I 1980
14.6	1. 7.88	E. Gwent	I.C.O.

APPENDIX E (Continued)

<i>Age</i>	<i>D.O.A.</i>	<i>Area</i>	<i>Reason/Order</i>
17.7	8. 7.88	Dyfed	Remand
16.2	12. 7.88	N. Gwent	Remand
16.1	14. 7.88	Newport	Remand
11.7	15. 7.88	Newport	Section I (7,7)
15.7	18. 7.88	Newport	Section II 1980
15.7	26. 7.88	N. Gwent	Remand
15.1	30. 7.88	Newport	Section II 1980
13.4	1. 8.88	E. Gwent	Remand
15.9	9. 8.88	Newport	Section II 1980
15.5	12. 8.88	Newport	Section II 1980
16.4	15. 8.88	N. Gwent	Remand
14.6	27. 8.88	N. Gwent	Remand
14.2	23. 8.88	Newport	Section I 1980
16.3	15. 9.88	Newport	Remand
16.2	27. 9.88	E. Valley	Remand
13.4	29. 9.88	Newport	Section II 1980
14.9	29. 9.88	E. Valley	Remand
14.1	3.10.88	N. Gwent	I.C.O.
14.5	4.10.88	N. Gwent	Remand
15.0	4.10.88	N. Gwent	Remand
15.0	4.10.88	N. Gwent	Remand
14.0	13.10.88	Newport	Section II 1980
15.3	18.10.88	E. Valley	Section II 1980
14.11	2.11.88	E. Valley	Section II 1980
13.11	19.11.88	E. Gwent	P.A.C.E. 38 (B)
11.9	19.11.88	E. Gwent	P.A.C.E. 38 (B)
15.8	20.11.88	E. Gwent	P.A.C.E. 38 (B)
14.8	20.11.88	E. Gwent	P.A.C.E. 38 (B)
16.7	21.11.88	E. Gwent	P.A.C.E. 38 (B)
13.6	22.11.88	S. Gwent	Section II 1980
13.9	23.11.88	E. Gwent	P.A.C.E. 38 (B)
15.6	28.11.88	Newport	Section II 1980

APPENDIX E (Continued)

ADMISSIONS 1989

<i>Age</i>	<i>D.O.A.</i>	<i>Area</i>	<i>Reason/Order</i>
13.9	4. 1.89	Newport	Section II 1980
15.7	9. 1.89	N. Gwent	Section I 1969
16.1	9. 1.89	N. Gwent	Section I 1969
14.6	16. 1.89	E. Gwent	Section II 1980
15.3	30. 1.89	E. Gwent	Section II 1980
15.1	31. 1.89	Newport	Section II 1980
10.7	3. 2.89	S. Gwent	Section II 1980
16.7	8. 2.89	E. Valley	P.A.C.E.
14.8	18. 2.89	Birmingham	Absconder
15.11	18. 2.89	Birmingham	Absconder
13.5	19. 2.89	Newport	Section I 1969
15.9	20. 2.89	Newport	Section II 1980
16.5	2. 3.89	S. Gwent	Remand
14.11	2. 3.89	Newport	Section II 1980
16.5	6. 3.89	Newport	Remand
15.5	9. 3.89	Newport	Section II 1980
15.0	15. 3.89	Dyfed	Section I 1969
15.1	16. 3.89	S. Gwent	Section II 1980
14.2	17. 3.89	Newport	Section II 1980
16.0	25. 3.89	S. Gwent	Remand
15.0	27. 3.89	Newport	Section II 1980
15.9	8. 4.89	E. Valley	Section II 1980
14.7	11. 4.89	Mid Glamorgan	Remand
16.0	17. 4.89	N. Gwent	I.C.O.
15.0	18. 4.89	S. Gwent	Section II 1980
16.0	24. 4.89	Newport	Section II 1980
13.4	26. 4.89	E. Valley	Section II 1980
13.7	26. 4.89	N. Gwent	Section I 1969
13.0	19. 5.89	Newport	Section II 1980
15.6	21. 5.89	E. Gwent	Section II 1980
12.0	26. 5.89	E. Gwent	Section III 1980
16.0	30. 4.89	E. Valley	Section II 1980
16.6	5. 6.89	E. Valley	Section II 1980
12.10	7. 6.89	Newport	Section II 1980
14.7	8. 6.89(RE3)	Newport	Section II 1980
15.5	12. 6.89	E. Valley	Section II 1980
13.7	12. 6.89	Mid Glamorgan	Section II 1980
14.6	20. 6.89	Mid Glamorgan	Remand
14.7	22. 6.89	Newport	Section II 1980
15.7	26. 6.89	N. Gwent	I.C.O.
14.8	26. 6.89	Newport	Section II 1980
16.11	7. 7.89	N. Gwent	Section II 1980
12.0	15. 7.89	Newport	Section II 1980



APPENDIX E (Continued)

<i>Age</i>	<i>D.O.A.</i>	<i>Area</i>	<i>Reason/Order</i>
17.1	22. 7.89	Newport	Section II 1980
15.0	26. 7.89	Newport	Section II 1980
15.0	9. 8.89	Dyfed	Remand
15.8	19. 8.89	Newport	Section II 1980
15.6	23. 6.89	Mid Glamorgan	Remand
14.4	31. 8.89	Mid Glamorgan	Remand
15.2	3. 9.89	Newport	Section II 1980
15.5	8. 9.89	N. Gwent	Remand
15.11	15. 9.89	Newport	Section II 1980
15.7	23. 9.89	Newport	Section I 1969
14.0	2.10.89	E. Valley	Section II 1980
15.0	3.10.89	Newport	Section II 1980
16.0	6.10.89	Newport	Section II 1980
13.10	12.10.89	Newport	Section I 1969
16.11	14.10.89	Newport	Section I 1969
14.7	10.10.89	Newport	Remand
10.10	20.10.89	E. Valley	Section II 1980
13.2	21.10.89	Newport	Section II 1980
16.0	24.10.89	E. Gwent	Section I 1969
15.0	30.10.89	E. Gwent	Section I 1969
12.5	9.11.89	S. Gwent	Section I 1969
15.9	13.11.89	Newport	Section II 1980
15.0	13.11.89	Mid Glamorgan	Remand
13.10	16.11.89	Mid Glamorgan	Section III 1980
15.8	16.11.89	Newport	Section II 1980
14.0	5.12.89	Newport	Remand
13.0	7.12.89	Newport	Section II 1980
16.11	21.12.89	N. Gwent	P.A.C.E.
16.4	28.12.89	Newport	Section II 1980

## APPENDIX E (Continued)

## ADMISSIONS 1990

<i>Age</i>	<i>D.O.A.</i>	<i>Area</i>	<i>Reason/Order</i>
16.0	3. 1.90	Newport	Section II 1980
15.7	15. 1.90	N. Gwent	Remand
14.3	16. 1.90	E. Valley	Remand
16.6	16. 1.90	E. Valley	Remand
16.1	18. 1.90	Newport	Section II 1980
13.10	31. 1.90	Newport	Section II 1980
13.3	9. 2.90	Newport	Section II 1980
16.0	24. 2.90	E. Gwent	Remand
15.11	27. 2.90	Newport	Section II 1980
14.0	16. 3.90	Newport	Section II 1980
14.0	28. 3.90	Newport	Remand
14.6	29. 3.90	S. Gwent	Section II 1980
14.0	3. 4.90	Mid Glamorgan	Remand
13.0	5. 4.90	Newport	Remand
16.2	8. 4.90	Newport	Section II 1980
13.2	11. 4.90	E. Valley	Section II 1980
15.9	12. 4.90	Dyfed	Remand
15.6	15. 4.90	E. Valley	P.A.C.E.
15.11	17. 4.90	Newport	Section II 1980
16.5	17. 4.90	E. Gwent	Section II 1980
17.0	21. 4.90	Newport	Section I 1969
16.2	23. 4.90	N. Gwent	Remand
13.3	24. 4.90	Newport	Remand
14.5	24. 4.90	Newport	Remand
13.11	24. 4.90	Newport	Section II 1980
16.5	29. 4.90	Newport	Section II 1980
13.10	8. 5.90	N. Gwent	Remand
13.0	11. 5.90	E. Valley	Section II 1980
13.11	20. 5.90	E. Valley	P.A.C.E.
14.6	26. 5.90	Newport	P.A.C.E.
15.9	2. 6.90	Newport	Remand
16.4	2. 6.90	Newport	Remand
15.4	6. 6.90	Dyfed	CYPA 69
16.3	6. 6.90	N. Gwent	Remand
14.10	13. 6.90	S. Gwent	Ward of Court
14.2	14. 6.90	Newport	Remand
14.2	15. 6.90	Newport	Section I 1969
16.6	19. 6.90	Cardiff	Remand
14.9	19. 6.90	Newport	I.C.O.
14.9	20. 6.90	E. Valley	Section II 1980
14.4	21. 6.90	Mid Glamorgan	Remand
15.10	28. 6.90	Mid Glamorgan	Remand
12.11	6. 7.90	N. Gwent	Remand

APPENDIX E (Continued)

<i>Age</i>	<i>D.O.A.</i>	<i>Area</i>	<i>Reason/Order</i>
14.6	6. 7.90	N. Gwent	Remand
14.1	6. 7.90	N. Gwent	Remand
14.2	8. 7.90	N. Gwent	Section II 1980
15.2	21. 7.90	E. Valley	Section II 1980
14.6	4. 8.90	Mid Glamorgan	Section II 1980
13.2	9. 8.90	S. Gwent	Section II 1980
15.11	9. 8.90	E. Valley	Section II 1980
15.4	24. 9.90	S. Gwent	Section II 1980
14.2	9.10.90	Newport	Section II 1980
14.7	9.10.90	E. Valley	Section II 1980
15.1	10.10.90	E. Valley	P.A.C.E.
12.2	11.10.90	Newport	Section II 1980
13.2	18.10.90	Newport	Section II 1980
14.11	19.10.90	S. Gwent	Section II 1980
16.0	25.10.90	Newport	Remand
16.6	26.10.90	N. Gwent	Section II 1980
15.3	27.10.90	Newport	Section II 1980
13.10	7.11.90	Newport	Remand
15.6	12.11.90	S. Gwent	I.C.O.
14.4	12.11.90	Newport	C.O. Section I
15.4	14.11.90	Newport	Section II 1980
15.6	21.11.90	Powys	Section II 1980
12.6	17.12.90	Newport	Section II 1980

APPENDIX E (Continued)

ADMISSIONS 1991

<i>Age</i>	<i>D.O.A.</i>	<i>Area</i>	<i>Reason/Order</i>
14.5	17. 1.91	E. Valley	P.A.C.E. 38 (B)
16.4	2. 2.91	N. Gwent	Remand
14.10	11. 2.91	Mid Glamorgan	Section II 1980
16.10	18. 2.91	N. Gwent	Section II 1980
11.7	20. 2.91	Newport	Section II 1980
13.3	24. 2.91	Newport	Section II 1980
15.7	4. 3.91	Newport	Section II 1980
16.6	6. 3.91	S. Gwent	Remand
15.0	12. 3.91	Newport	Section II 1980
14.7	18. 3.91	N. Gwent	Section II 1980
16.7	22. 3.91	N. Gwent	Remand
16.3	13. 4.91	Newport	Remand
16.1	13. 4.91	S. Gwent	Section II 1980
15.6	15. 4.91	N. Gwent	Section II 1980
16.10	29. 4.91	E. Valley	Remand
15.2	4. 5.91	Mid Glamorgan	Section II 1980
15.8	19. 5.91	Newport	Remand
14.9	23. 5.91	Dyfed	Remand
15.9	29. 5.91	E. Valley	Section II 1980
14.8	19. 6.91	Newport	Remand
16.6	11. 7.91	N. Gwent	Section II 1980
14.8	11. 7.91	Newport	Section II 1980
14.5	11. 7.91	E. Valley	Section II 1980
15.2	14. 7.91	N. Gwent	Place of Safety
13.10	13. 7.91	Kent	Remand
12.4	16. 7.91	E. Valley	Section II 1980
14.5	16. 7.91	E. Valley	Section II 1980
15.9	16. 7.91	N. Gwent	Emergency Admission

# APPENDIX F

## THE ONLEY LETTERS

Hi there Mr. Phelan,

How are you Sir. Sorry about waht I done OK. And I hope you will forgive me for it. Like most of the boys say that used to be there. Ty Mawr was the best days of my life I wish I was there now oh I really do. This letter is only short because I have all ready wrote two befor this one tell all th eboys in there to stay out of prison because it's a bad place to be. I heard that you are having a meeting there about were I can go hope I can come back I know it sounds cheeky after what I done but I would love to come back there. By the way I was not the ring leader know one was we just all edged each other on. Anyway I am very very sorry for what I done and I would like you to tell all the staff that. You can come and visit me if you want Sir I am not arslicking you Sir I would love to come back so see you can get me back there OK.

Goodbye for now see you soon.

P.S.—If I cannot come back I will still come and visit OK.

Goodbye.

P.P.S.—Don't forget to tell the boy's and staff what I said.

## APPENDIX F (Continued)

18th July.

Dear Jeff,

How are you old son? as Mr. Harper would say. Hope you are well as I've had a bad dose of hay fever as every year. Thank you for your letter. I'm missing Ty Mawr now. Not just because I'm in here like but I'm genuinely missing it as I did when I went home for 1-2 weeks. That's why I usually came back when I was on the run. I wish we could go back in time to this time last year. We was having fun then wasn't we? What with all the old boy's there and all. Glasgow, Padfield Barry you know all the old boy's. When we was allowed to have our own clothes and I missed the excitement of going to get them. But I've got to put it behind me as I know I'll never be able to go there now.

My actual leaving date is the 13th of August which isn't long at all. I've got, hang on just look it up on my home made calendar, its 26 day's and a breakfast then I'm out.

My sister is going to move to Dan-a-Derri in Abergavenny either before Christmas or just after the new year and I shall be going with her as she feels that Newport is getting to bad on the drugs and crime scene. She does not want her daughter, Kaleigh, my niece, to grow up in such an environment as she would be sure to turn out like myself or Michelle was when she was a youth and I agree with her. It would be just like a fresh start wouldn't it.

Have you received a letter off of Kai as he sent one to me? How is your shop doing? Tell the dragon not to nag you so hard as you only get one set of ears. Ha Ha. And how is the Tredegar rugby team doing not to bad I hope. We are doing nicely in here now because when we have education we have to go over to the main prison and me and Kai talks to the prisoners over there and swaps rollies and matches off them and brings them back here to our wing were we're not allowed fags and sells them for pop and biscuits so we are having a bit of whelming and dealing in here as well. All you've got to do for an easy life in here is get a bit of baccy under your belt and you are well away. Us and the boys are all okay and sorted out now. I helps Bowyer out when I can as he's only next door. My mum came up to visit me today. She came with my social worker, Wayne Arnold, and my sister Michelle. It took them 4 hours odd to get here because people was sending them in the wrong directions when they stopped to ask. Just because they are Welsh. Even an old lady sent them the wrong way. "Excuse me a minute while I have a break from writing with Kai." Ahh that's better a nice cup of pop each and a packet of biscuits. Does us convicts wonders.

I shall come and visit you all when I get out to say hello to my family because that is what you all were to me and all the other boys. And I know all the old boys felt like that as well especially Glasgow I will get Lee to come up as well as I keep in touch with him as well!

## APPENDIX F (Continued)

Oh aye, could you do me a favour Jeff please? Could you ask Mr. Nixon (schoolblock) to write me a sort of reference, you know for painting and decorating. You know, just to show any future employer I might have that I've got a bit of ability to paint and decorate. So I could get a bit of a job to tie me over till next year when I might join the army if that has nbot worked. What do you think? At the moment Kai is also writing a letter to Glen Richards.

I tell you what, by the time we come out of here we will be the Men because they put you through your paces here in P.E. I can tell you, Mark Matthews fainted during the circuit and packed up. And you can't refuse to do it else you go down the block for a couple of days. But we are used to it now. Kai has already been noticed for his love of sports here and gets on well with our P.E. Instructor who is ex-marines, he is a bodybuilder as well. And guess what he is Welsh. Although he isn't that fond of Welshman as he says we care of let down to Wales. I suppose he's right really isn't he. The majority of 'I' wing are Welsh which we were relieved to find out as you could imagine. Well I'm tired now and I'm going to go to sleep as it is late now (besides the fact my hand is killing). I've remembered the advice you used to give me and only wish I'd listened then and I wouldn't have been here now. But I'll try and go by them now though. So bye write back soon please look after yourself.

P.S.—Tell Chris Philin that he's got a friend in me and I remember him only I can't afford to send him a letter as well so I'll phone him or write to him as soon as I get the chance to. And he's right about what ex Ty-Mawr boys think when they are in prison and I'm sorry for what I done to his school and I'm sorry if he had any stick for it or if any of you staff had stick I'm sorry.

P.P.S.—This is the longest letter I've wrote and my hands killing.

# APPENDIX G

## CONDITIONS OF USE OF SECURE ACCOMMODATION IMPOSED BY THE WELSH OFFICE IN RESPECT OF TY MAWR

### 1. PRIOR TO APRIL 1992

The use of secure accommodation for no matter how short a period, is governed by the Child Care Act, 1980 and the Secure Accommodation (No. 2) Regulations 1983. In addition the Secretary of State can impose conditions and has done so in the case of all secure accommodation in Wales. These conditions are:

- (a) the level of staffing currently available to be deployed in the secure unit should not be reduced without the prior agreement of the Secretary of State,
- (b) no child should be confined within the secure unit for a continuous period of more than eight days,
- (c) no child should be confined within the secure unit for a continual period longer than two months,
- (d) continual confinement should be interpreted as meaning confinement within the secure unit for no more than sixteen hours in any twenty four hour period,
- (e) a continuous confinement of eight days should not be followed by subsequent continuous confinement in the secure unit until the lapse of a twenty four hour period, and
- (f) in any three week period no child should be confined within the secure unit for an aggregated period greater than fourteen days.

The conditions can only be varied with the consent of the Secretary of State. Approval for the use of the secure accommodation unit can be withdrawn at any time by the Secretary of State if the conditions are not observed or serious deficiencies in practice are discovered.



## APPENDIX G (Continued)

### 2. AS FROM 1st APRIL 1992

The purpose of these Conditions of Use is to limit use to that which is appropriate having regard to the size of the accommodation, the facilities available within the accommodation and the levels of staffing.

#### DEFINITIONS:

A day is defined as a period of time between midnight and midnight.

Continuous confinement is defined as confinement in the secure unit on consecutive days.

1. Whenever at least one child is confined within the secure unit, there shall be a minimum of two members of staff on duty within the unit; at least one of whom shall be of the same gender as the child; except when all children within the unit are confined to locked bedrooms when there shall be a minimum of one member of staff within the secure unit at least one other member of staff immediately available, one of whom shall be the same gender of each child confined.
2. No child shall be confined in the secure unit on more than eight consecutive days.
3. A continuous confinement of eight consecutive days must be followed by a lapse of a day before further confinement may begin.
4. In any twenty-eight day period, no child shall be confined on more than fourteen days.
5. In any thirteen week period, no child shall be confined on more than twenty-eight days.
6. Within the secure unit, no child shall be confined to a locked bedroom, except for a maximum period of eight hours in any day, and then for the purpose of normal sleep.
7. Within any period of continuous confinement, after confinement on any four consecutive days, any child so confined shall spend at least four hours per day outside the secure perimeter.